



**Kaipātiki
Project**

share in nature's revival

ar 22

TE PŪRONGO Ā-TAU
Annual Report 2022

Photo by *Melanie Tuscia*

RĀRANGI ŪPOKO

Contents

- 3** TŌ MĀTOU TUAKIRITANGA
Our Story
- 4** TĒNĀ KOUTOU NĀ TE
TOIHAU ME TE TUMUAKI
Greetings from the
Chair and the Manager
- 6** NGĀ MOEMOEĀ
Our Vision
- 8** TŌ MĀTOU RŌPŪ
Meet Our Team
- 10** TŌ MĀTOU PĀNGA
Our Impact

- 11** TĒ TAIKĀKĀ
Resilience & Capability
 - 12** NGĀ WHAKAWHIWHINGA
Awards & Recognition
 - 14** WHAKAHOU TĀIAO
Regenerative Environments
 - 20** NGĀ MAHI AKO
Experiential Learning for
Sustainable Living
 - 24** MAHI TAHI
Partnering & Engaging to
Build Resilient Communities
- NGĀ MIHI MAIOHA**

TŌ MĀTOU TUAKIRITANGA

Our Story

Ko Taropehu te maunga

Ko Oruamo te awa

Ko Te Hau Kapua te takiwā

Ko Pākaurua te rohe

**Ko Te Rōpu Kaipātiki tamore
mātou**

**No reira, tēnā koutou, tēnā
koutou, tēnā koutou katoa.**

This pepeha was kindly gifted to Kaipātiki
Project by Matua Pat Ruka.

Formed in 1998 in Auckland's North, Kaipātiki Project acknowledges the rights and interests of nature, place and people using a whole living systems approach. Embracing Te Ao Māori, we partner with mana whenua and mataawaka Māori to understand how mātauranga Māori can improve environmental outcomes for the area and incorporate this into our work, to help restore the taiao whenua, awa, puna and tangaroa.

Humans not only depend on ecosystems, but also influence them, therefore our work strives to lead by example and demonstrate new ways of working and living that help drive systemic change through world class thinking and delivery. It is critical we empower our communities to implement climate actions that aim to reduce greenhouse gas emissions to achieve a greater balance and reciprocity between the carbon emitted and the carbon that our environment can sequester.

We achieve this by creating a range of opportunities to share knowledge and connection to Te Taiao with our diverse communities; volunteering, internships, experiential learning courses, community events, online

& social media platforms, EcoFest North, Network North, mentor/umbrella fledgling groups, project collaboration and partnerships, membership to local and national networks and strengthening Iwi relationships.

We deliver these opportunities from several sites including: Native Plant Nursery, Teaching Garden, Community Compost Hubs in Birkdale and Hobsonville Point, Zero Waste Hub Northcote, and programmes delivered in reserves, streams, and coastal margins in Auckland's North.

Achieving our strategy requires us to work boldly within and across sectors. Our community-led approach for Te Taiao supports renewed and regenerated ecosystems and communities. We work collaboratively where possible and appropriate, working together to grow our impact for a sustainable future for people and nature.

Kaipātiki Project plays a vital role to support, engage and enable our community and volunteers to participate in regenerative environment and sustainable living activities that support overall wellbeing, bringing communities together, enhancing skills and creativity, and building a sense of pride. We engage with intent, to work with a diverse range of volunteers, members, partners, funders, supporters, collaborators, donors and participants.

TĒNĀ KOUTOU NĀ TE TOIHAU ME TE TUMUAKI

Greetings from the Chair and the Manager

Kia ora koutou katoa

Kaipātiki Project finishes on a high note this year, with the completion of our new home building. Nestled in our turangawaewae of Eskdale Reserve Network, it builds on more than 10 years' work through generations of Kaipātiki Project boards, volunteers, members and staff. It weaves together the aspirations and dreams for what we might achieve in the future, and supports those working for people and nature right now.

This year has offered many challenges, including illness and COVID-related delays. We would like to acknowledge the hard work and dedication of staff, who have navigated these challenges, including the changing culture of work-from-home and online meetings, compounded through being without an HQ. Thanks also to the support of Kaipātiki Local Board and the Beach Haven Birkdale Community Project for their support with a temporary office space this year.

There have been many highlights this year, despite COVID-19 reducing our volunteering and participation. We hosted the opening of the upgraded Eskdale Reserve tracks and kauri cleaning stations after closure a few years ago to protect the many mature kauri. We now support 11 areas in Eskdale Reserve under community pest animal and weed management, with regular contribution and increasing leadership by volunteers. Nursery native plant sales have achieved a new record, realising increased support for community restoration activities and restoration networks across the Tāmaki Ecological

District. We are implementing a monitoring & evaluation framework developed with mana whenua that supports mauri indicators, and we are collaborating with Community Waitakere to extend monitoring, protection and habitat enhancement for pekapeka-tou-roa (long-tailed bat).

In the area of Food Resilience, we are developing skills and insights working with Maramataka to guide our approach. Following the success of the Hobsonville Community Compost Hub co-located with the community garden, we established one adjacent to the Eskdale Reserve teaching garden, as well as supported Northcote Intermediate to develop their own community compost hub as part of supporting their community garden development. Partnerships with the four Kaipātiki Community Houses have resulted in more community gardens and more local people confident to grow their own food.

In collaboration with Highbury House and Onewa Christian Community, we have partnered with Food Together to set up a food co-op, helping locals to access fresh, seasonal, plastic-wrapping-free fruit and vegetables at a better price.

Our Para Kore Zero Waste Northcote work is developing a food business composting pilot with Eke Panuku, to remove food scraps from business waste to landfill. We were also able to support the new North-West Inorganic Hub opening, which will enable even more materials to be diverted from landfill and be available for community use and enterprise.

Our bywords remain collaboration and partnership, because no one organisation can do it alone. Compost Collective is our successful food waste behaviour-change programme delivered in collaboration with EcoMatters Environment Trust. This year we innovated into micro-funding for compost hub start-ups, to support network growth, and in the next year we will convene a regional composting network. EcoFest North is building on its successes since 2013, now looking ahead to partner with other EcoHubs to welcome more participation and impact across Tāmaki Makaurau. Network North is going from strength to strength, facilitating shared learning and collaboration for environmental groups across Auckland's North. The Iwi, Hapū and Community Nurseries Network has increased participation to 58 nurseries and is now working with NZ Plant Producers Institute to deliver biosecurity certification.

Thank you to our wide range of partners, funders, staff members, volunteers, supporters and customers for sharing our dreams and investing in a better future for us all. We celebrate all those who, through your hard work and energy, make change happen.

Charmaine Bailie, Chair

Janet Cole, Manager



**CHARMAINE
BAILIE**
Chair



**JANET
COLE**
Manager

NGĀ MOEMOEĀ Our Vision

Kaipātiki Project
is an innovative
EcoHub growing
a sustainable
future for people
and nature.

Our Values

Manaakitanga

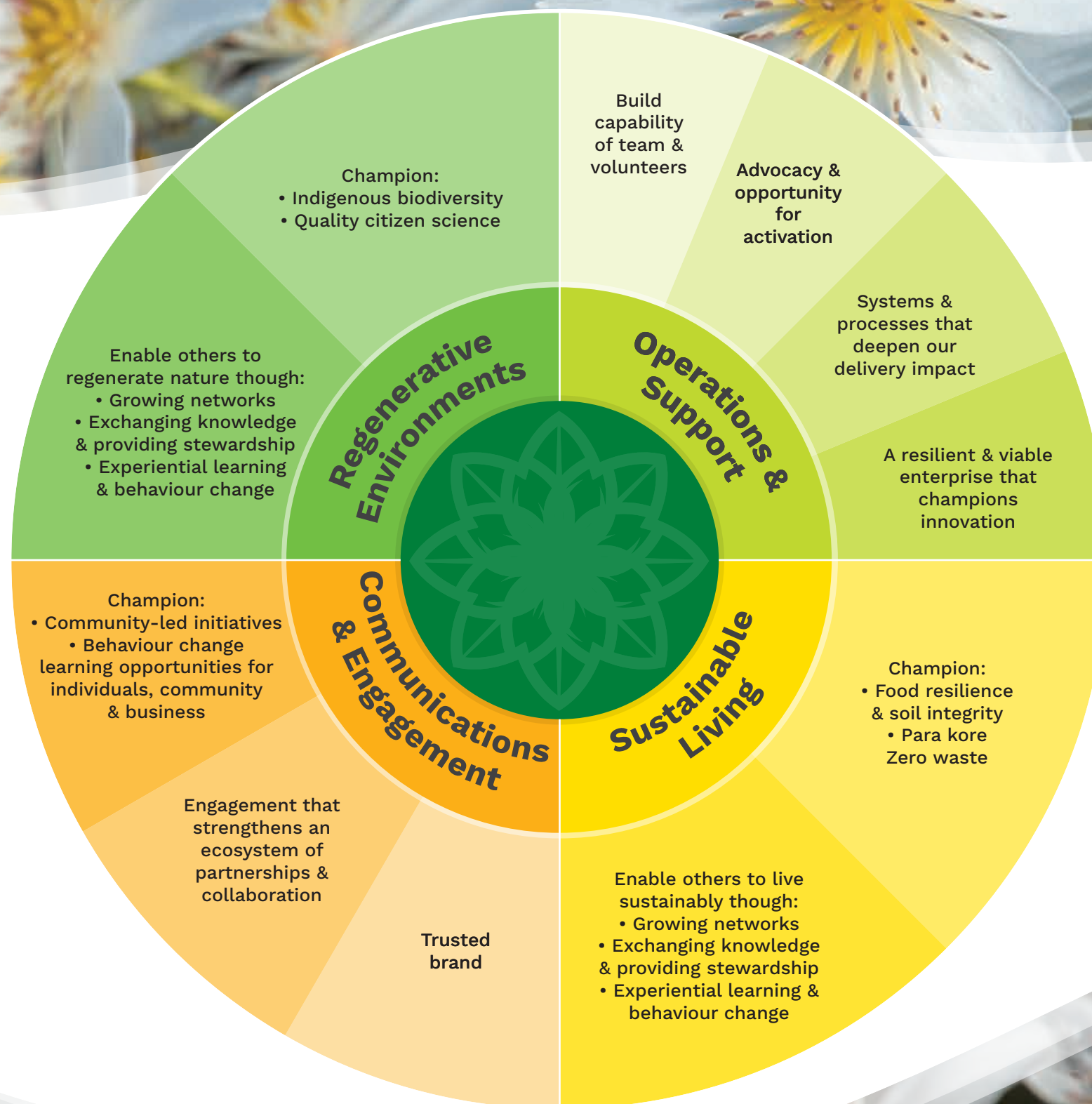
Each of us seeks to encourage and uplift all those we welcome and work with.

Whanaungatanga

We nurture relationships and reciprocal connections that build belonging to community and place.

Kaitiakitanga

Developing shared caring for and responsibility to our local places.



Our Culture & Practice

- Honour Te Tiriti o Waitangi
- Embrace Te Ao Māori & Mātauranga Māori
- Seek authenticity of local place
- Act with transparency
- Lifelong learning for sustainability
- World class thinking and delivery
- Drive systemic change
- Team and volunteers' contribution valued & recognised

TŌ MĀTOU RŌPŪ

Meet Our Team

Volunteer Board



CHARMAINE BAILIE
Chairperson

Charmaine grew up just down the road from the Kaipātiki Project centre and has been involved since 2000 in many different roles. Charmaine is inaugural Winner in Te Toa Taiao o Te Tau / the Environmental Hero of the Year 2022 and a Director of Uru Whaakaro Ltd - a natural heritage management company specialising in traditional and experimental restoration.



CERASELA STANCU
Deputy Chairperson

Cerasela joined the Board in October 2016. She has had senior roles in environmental NGOs in her native Romania and in Hungary and the wider EU. Here in New Zealand, she has led sustainability and impact investment programmes at Fonterra and Landcare Research and is now a consultant sustainability strategist at EnviroStrat.



JENNY CHILCOTT
Board Member

Jenny has been on the Board since July 2016. Her background is in community-led development and engagement, she also worked at Auckland Council as a strategic advisor on waste, and is currently national Urban Ngāhere lead for Kainga Ora.



HILARY CHIDLOW
Board Member

Hilary joined the Board in October 2018. She has over 22 years' experience as Manager, Education for Sustainability at Auckland Council.



NIGEL GREEN
Board Member

Nigel joined the Board in October 2018. He has worked as a Manager in the Social Profit sector since 1993, and has broad experience in all aspects of management with a particular focus on developing and supporting community.



BEN SHEERAN
Board Member

Ben is an experienced resource management policy planner, environmental economist and project manager. He brings over 15 years' experience in the practical application of sustainability and is actively involved in local community conservation.

Operations & Support



JANET COLE
Manager



SANDRA ATKINS
Operations Manager



JOANNE KYRIAZOPOULOS
Grants & Impact Specialist



IRINA ZGOBA
Cleaner

Communications & Engagement



SAM TU'ITAHİ
Kaitakawāenga Hāpori | Community Activator



BLANKA ROS
Marketing Strategist



DAN DE KLERK
Digital Communications & Event Facilitator



ANNA SHAW
Administration Assistant & Compost Collective Co-ordinator

Regenerative Environments



DEREK CRAIG
Restoration Nursery Manager



CRYSTAL ASTON
Nursery Assistant



NEIL HENDERSON
Kaiwhakahaere Taiao | Restoration Activator



TAKUTAI MOANA WATTS
Kaiwhina Kaitiaki | Restoration Assistant



MARIA VALKOVA
Restoration Group Co-ordinator



AMBER DE BOER
Freshwater Activator



JAIME CALVERT
Regeneration Team Member



BRETT STANSFIELD
Freshwater Ecologist (contractor)

Sustainable Living



JUDITH ROSAMUND
Teaching Garden Co-ordinator



ROBYN FORRYAN
Para Kore Zero Waste Activator



WAIATA RAMEKA-TUPE
Kaiāwhina ō Rongo Teaching Garden

Aroha goes out to Dalida Semenova, Samantha Gemmell, Amber De Boer, who left during the year. Thank you for all that you did to support our journey.

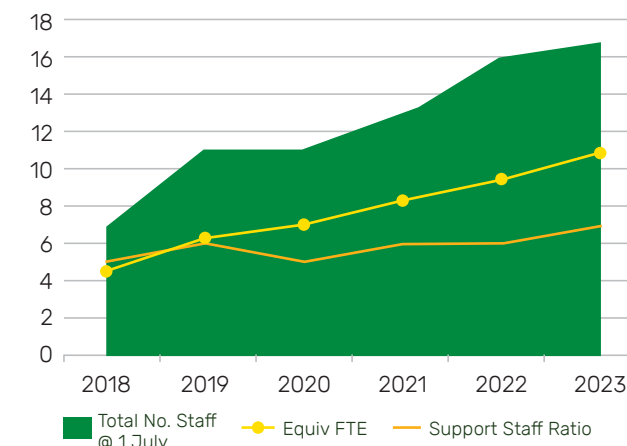
TŌ MĀTOU PĀNGA Our Impact

2022		2021	% change
42,044	eco-sourced, chemical-free native plants grown (89 species)	44,959	↓ -6%
129	nursery & teaching garden regular volunteers	123	↑ 5%
3,795	nursery & teaching garden regular volunteer hours	5,850	↓ -35%*
111	bush restoration and planting days	75	↑ 48%
862	restoration volunteers	830	↑ 4%
3,083	restoration volunteer hours	3,554	↓ -13%*
9,560	kg of pest plants removed	8,400	↑ 14%
17	stream sites monitored	14	↑ 21%
708	participants across 84 experiential learning workshops	1,632	↓ -57%*
3,475	Compost Collective workshop participants across 324 workshops	6,081	↓ -43%*
241	tonnes of waste diverted	419	↓ -42%*
35,846	website visits (5,403 Facebook followers)	32,978	↑ 9%

*Due to COVID restrictions and limitations on gathering we needed to manage volunteer numbers, resulting in a reduced number of regular volunteers allowed onsite. We also ran a reduced number of volunteer sessions and workshops due to lockdowns.

TĒ TAIKĀKĀ Resilience & Capability

Staff Growth and Capability

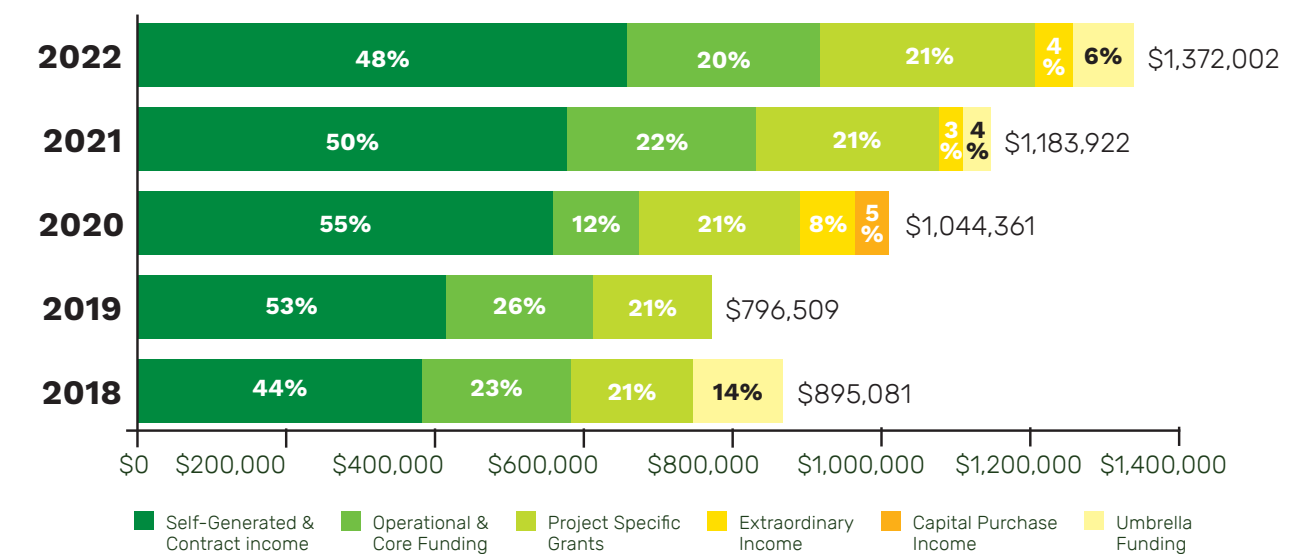


We have remained focused over the past year on delivering in areas that are core to our strategy and values. This has enabled us to positively adapt our engagement and response over challenging months and seen us

successfully realise our delivery goals. In turn, this has created a need to build capacity within our teams, to strengthen them and provide for ongoing capability. We are proud of how our regenerative environments team has grown, generating stronger support across project delivery and laid the foundations for deeper opportunity and resilience going forward.

We celebrate the continued growth across all areas of funding and income, and recognise the subsidy support, selectively applied through our very long lockdown period, has been critical to sustaining our people and to continue to invest in systems that support them. Growth remains proportionate, including the level of our multi-year funding. This consistency is a primary contributor to our ability to adapt, to invest and to build. The coming year will be one of consolidation, embedding systems for a larger team, and enabling their capacity to embrace innovation and belonging.

Income Sustainability - Shows 2018-2022 split of income



NGĀ WHAKAWHIWHINGA Awards & Recognition

New Zealander of the Year 2022 - Winner in Te Toa Taiao o Te Tau / the Environmental Hero of the Year category

Charmaine Bailie, Kaipātiki Project Chair (Te Uri o Hau - Ngati Whatua ki Kaipara) has been an inspirational ecologist, ethnobotanist and an active community leader for more than 20 years. Her voluntary work has had a demonstrable and profound impact on communities and the land. Charmaine led the establishment of Ōkahu Rākau nursery and restoration of Whenua Rangatira in Ōrākei. This is the largest urban, Māori-led restoration project in Aotearoa, and has become a fountain of knowledge for others to learn from. An ecological lead working on the Ara Tūhono Pūhoi to Warkworth highway, Charmaine's knowledge and influence has enriched 1.2 million trees planted along 18km of motorway. Working on Motutapu Island with Ngāi Tai Ki Tāmaki, Charmaine has helped establish a nursery, developed a kaitiaki team and plan for the planting of 120,000 natives on Hukanui Pā. Charmaine works with multiple Iwi and nursery programmes such as the Kaipara Moana Remediation, which aims to restore 20 million native plants and has established Iwi, Hapū, Community Nurseries Network connecting 45+ nurseries across Tāmaki Makaurau region. Charmaine is a long-time volunteer, current Chair and a Life Member at Kaipātiki Project, and we are incredibly fortunate to be working with and continue learning from Charmaine.



New Zealand Environmental Hero of the Year
Te Toa Taiao o te Tau

Westpac Auckland Business Awards 2022

Kaipātiki Project - Finalist in Excellence in Community Contribution: North & West (Winner announced in October 2022)

Volunteering Auckland's LOVE Award 2022

Sam Tu'itahi, Kaipātiki Project Kaitakawāenga Hāpori | Community Activator - Winner of the Leader of Volunteer Engagement Award



Sam Tu'itahi - Winner of LoVE Award

Sustainable Business Awards 2021

Charmaine Bailie, Kaipātiki Project Chair - Commendation in the Sustainability Superstar category

Kaipātiki Project - Finalist in the Social Impactor category

Mayoral Conservation Awards 2021

Street Guardians, who volunteer at Kaipātiki Project, were highly commended in the Collaboration category due to their volunteering contribution

The Kūmara Awards 2021

Jessie Tonar Scout Reserve regeneration initiative - Award in the 'Saving the World One Place at a Time' category for being the flourishing result of collective regenerative placemaking efforts that nurture both people and place



Neil Henderson representing the team for The Kūmara Awards

WHAKAHOU TAI AO

Regenerative Environments

“

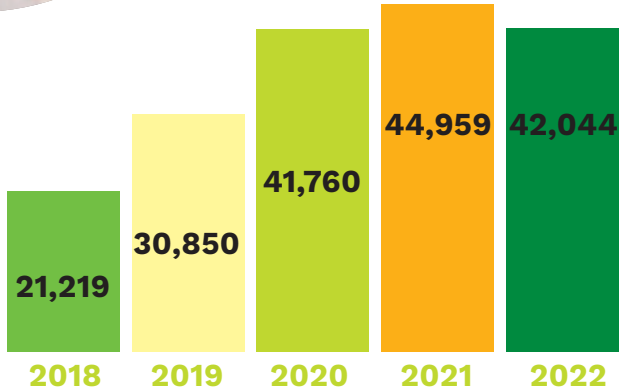
“I look forward to volunteer mornings with such glee in my heart...it’s always a very fun and lively environment to work in... I’ve learned a lot of factual information about native plants and learned a lot about other people because we have volunteers from all over the world here.”

Nursery Volunteer

Regenerating nature is vital if we are to tackle climate change and indigenous species extinction, as well as secure a positive future for everyone. Healthy ecosystems are an effective way to develop climate and community resilience, and safely absorb greenhouse gas emissions. Across our regenerative environment programmes, we aim to bring together current best practice in ecology, alongside Mātauranga Māori expressed in the whole system approach that Kaipātiki Project practices.

We are concerned that The National Policy Statement on Indigenous Biodiversity will create increased pressure and expectation on Local Government to implement more effective monitoring and surveying of local Biodiversity and demonstrate how activities contribute to outcomes. In the Auckland Region with its ongoing extensive urban development, our collective response is critical and local citizen science has matured to the point where volunteers play a big role here.

Our base in the Eskdale Reserve Network is home to rare or cryptic native fauna including Giant kokupu, Kakāhi, Moho Pereru and Titiwai. Fortunate to have these and other important indicator species such as Pekapeka tou-roa in Kaipātiki and Upper Waitematā area, we are developing monitoring and surveying programmes with community partners and volunteers, to help fill gaps in our knowledge of local biodiversity, as well as giving us accurate guides to how well our regeneration efforts are tracking.

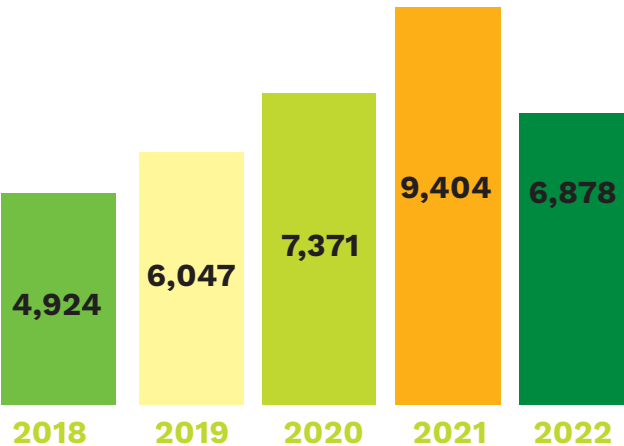


native plants grown since 2018

180,832

34,624

volunteer hours since 2018 valued at **\$818,858** based on NZ living wage at \$23.65 per hour





Exemplar Biodiverse Native Plant Nursery

The native plant nursery operates at Birkdale and Hobsonville Point sites to produce an extensive range of plants for restoration. Our goal is to enhance biodiversity and currently grow 89 different native species. With support from our amazing nursery volunteers, we have grown over 42,000 plants in the last year, all eco-sourced from the Tāmaki Ecological District, to help restore the bush for our native birds, animals and plants, and remove carbon from the atmosphere. We also collaborate to facilitate the Iwi, Hapū & Community Nurseries network – supporting, enabling and upskilling the 58 nurseries in the network across Tāmaki Makaurau.



Te Ara Awataha Regeneration

Kaipātiki Project continues to deliver the community-led restoration of Jessie Tonar Scout Reserve on behalf of Eke Panuku in partnership with mana whenua, Auckland Council's Healthy Waters and the Kaipātiki Local Board. Working to deliver on the aspirations of the Take Mauri Take Hono mauri indicator framework developed by mana whenua, we are embedding this whole systems approach for community restoration. This framework guides our efforts to boost the mauri of the stream, improve water quality and allow it to become a habitat for birds, insects, and tuna once more. We are active in the reserve on a regular basis with neighbours, schools, community volunteers, corporate groups and Auckland City Mission Street Guardians. The project is increasingly reconnecting the community to this lost environmental taonga and will continue through the wider stream daylighting project.



Streamcare Kaipātiki

Our Streamcare programme continued, in partnership with Environmental Assessments Impact Ltd and Pest Free Kaipātiki, during the last 12 months. We facilitate stream workshops each term with six schools in the Kaipātiki Local Board area, and train community groups to carryout freshwater monitoring. Collectively 17 streams are being monitored, enabling the community to participate in quality citizen science and to provide publicly available data on the state of freshwater, invertebrate and fish populations in local streams. We were thrilled to introduce eDNA testing during a session delivered by Dr Dan Hikuroa with Bayview School students and launch Streamcare Kaipātiki onto the open-source Takiwa Map, providing each school with their own profile to keep adding their data.



Upper Waitematā Regeneration

Our focus in the Upper Waitematā has been on Clearwater Cove Reserve and the wetlands, adjacent to the West Harbour Marina, one of Auckland's most significant estuarial wetlands, as recognised by DOC. It is currently in a state of neglect with serious incursions of invasive weed species, and it harbours animal pest species like rats and possums that are a direct threat to wildlife including cryptic bird species. Kaipātiki Project is engaging community to participate in regenerating their local environment, working with local volunteers, groups and schools on a regular basis to accelerate the necessary work required to improve the native eco-systems in this area.



Waipapa Stream Regeneration

The Waipapa Stream Restoration Programme is a continuation of restoration works of pest plant control and replacement native planting along the open section of Waipapa Stream. We facilitate regular working bees to weed, mulch, plant native plants, control animal pests and monitor progress. This year two new activities were included, a harakeke weaving workshop and initiating ongoing community water quality testing.



Eskdale Reserve Network Regeneration

Eskdale Reserve Network is classified as a 'High Value' site and a Significant Ecological Area under the Auckland Council Unitary Plan. Eskdale is our tūrangawaewae – our home – and as such the Regeneration Team has focused on significantly growing the number of volunteer and experiential learning activities, we offer year-round, accelerating on the ground work, citizen science and community engagement in one of the most unique urban forest eco-systems and one of the largest urban forests in Tāmaki Makaurau ecological region. Our community-led actions contribute to Predator Free 2050, the reduction of invasive weed species, and improving native eco-systems. It was great to organise the event celebrating the opening of the new tracks at Eskdale Reserve Network. The new tracks are a world of difference – they have been simplified and re-routed away from kauri trees and designed to a standard to help prevent the spread of kauri dieback disease.



Taonga Species Biodiversity Monitoring

We initiated the first year of taonga species biodiversity monitoring projects, with the goal to engage with local community, iwi and stakeholders in order to increase our understanding of present populations of Titiwai (Glowworms) and Kākahi (Freshwater Mussels) in the Eskdale and Witheford Reserve Network. We are training volunteers and partners in the appropriate best practice to undertake initial baseline surveys and conduct regular ongoing monitoring of specific populations once identified. In addition, we are establishing opportunities whereby habitat restoration/protection is undertaken by volunteers to enhance the survival of identified populations or create circumstances whereby new colonies can become established in previously degraded or completely new sites. This year, Kaipātiki Project has also collaborated with Community Waitakere to undertake surveys of Pekapeka tou roa (Long Tailed Bats) across Kaipātiki and the wider Auckland North/West local board areas. This study is aimed at filling in some big gaps in our knowledge of bat presence in these areas through training local people to use automatic and handheld bat detectors.

NGĀ MAHI AKO

Experiential Learning for Sustainable Living

“

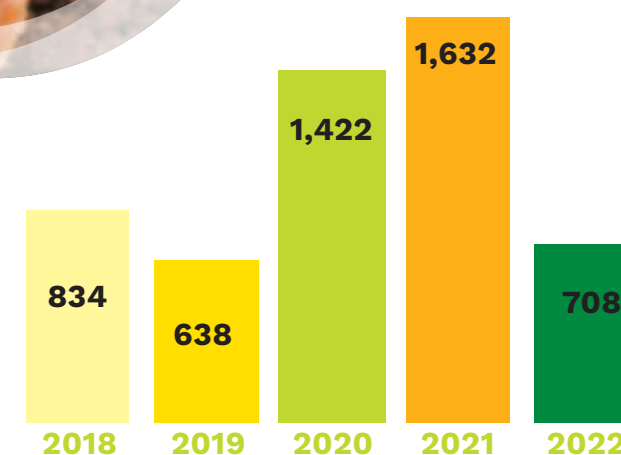
“Diverting your food scraps to your local community compost hub is perhaps one of the most empowering things we can do to address climate crisis. Everyone eats food, and therefore everyone can be part of the solution. Using food scraps to make quality living compost, returns carbon and nutrients to the soil, generating fertility to grow more food.”

Judith Rosamund

Kaipātiki Project Teaching Garden Co-ordinator

As an innovative EcoHub, sustainable living is our bread and butter (or sourdough and vegan spread). Our work focuses on supporting iwi, hapū, community and businesses to understand and change behaviours in response to the environmental and social challenges we face. In our own work we look to walk the talk in a way that takes everyone on the journey together.

We partner with multiple stakeholders at a local and national level, and provide education, training, hands-on experience, networking and mentoring opportunities to individuals, local organisations/groups, corporates groups, schools and academic institutions.

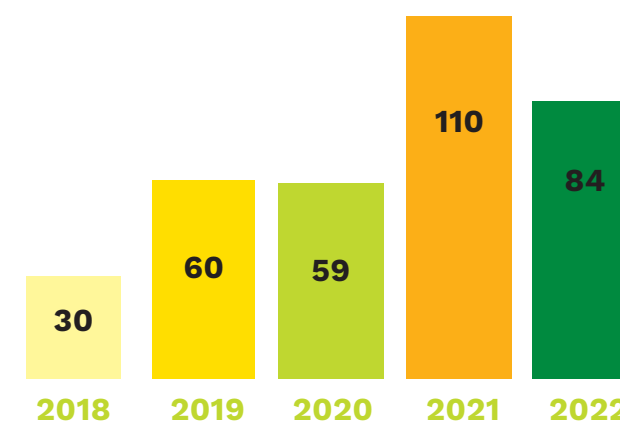


workshop participants
since 2018

5,234

343

workshops since 2018





Teaching Garden

The team have introduced site-specific maramataka calendar for the gardens, recording observations and learnings to help plan the cycle of activities in the garden year-round. The garden continues to develop a circular process sustainable edible garden - improving soil fertility, planting strong seeds, maintaining plant health organically to produce nutrient dense food, harvesting and sharing this abundance with community, saving seeds for the next growing season, and working to environmental conditions. Our garden volunteers radiate a strong connection to the land and each other, regularly sharing homemade kai with ingredients grown in the gardens and delicious recipes from their respective cultures.



Hobsonville & Kaipātiki Community Compost Hubs

During the year we launched our second Community Compost Hub, this time based in Kaipātiki. The compost hubs enable local community to compost with us by dropping off their food scraps. We take bokashi'd food scraps and layer with green waste from our nursery and gardens using CarbonCycle Hot Compost systems. The hubs help to reduce waste going to landfill and produce good quality living compost that helps to improve local soil fertility. At the hubs we regularly host free composting workshops through Compost Collective.



Zero Waste Hub Northcote

The hub serves the community through education, support and collaboration with a focus on achieving the goal of Zero Waste 2040 in the Northcote town centre and surrounding residential and business area. With support from a growing number of volunteers the hub has been able to develop deeper connections with the community, run composting and upcycling workshops, hosted Repair Café and collaborated in local events such as Recycled City and the Winter Festival.



Compost Collective

A behaviour-change programme building community capacity to divert waste from landfill and carbon from the atmosphere through on-site composting of food and garden waste. It supports Auckland Council's vision to become zero waste by 2040, by inspiring and educating Aucklanders to compost their food scraps and garden waste at home or within their community. The programme is a collaboration between Kaipātiki Project and EcoMatters Environment Trust, with a team of expert facilitators. Compost Collective offers free home, small business and community composting education and support using worm farms, bokashi buckets & traditional compost bins. As city living changes, so does the programme, which continues to educate and increasingly supports initiatives to establish community hubs, divert waste locally and contribute to a reduced community carbon footprint.



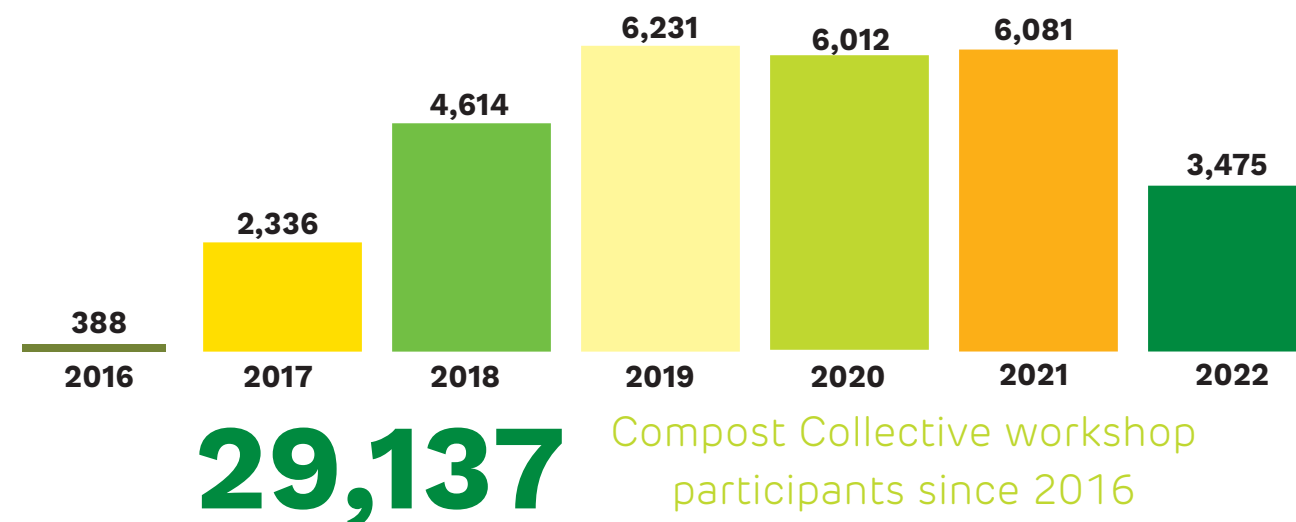
Sustainability Workshops

Every year we deliver sustainable living workshops, events and experiences open to everyone. As we prepare for the opening of the newly rebuilt Kaipātiki Project EcoHub, we find ourselves in an exciting space with the opportunity to reimagine and refocus our contribution to education for sustainability in Auckland's North. The new fit-for-purpose space will be available to strengthen our connection with people and build communities as we strive to foster a sense of stewardship for our living planet.



Northcote Intermediate School

Northcote Intermediate sits central to much of the envisioned Northcote Development and is set for significant development over the next few years. The school vision is to become carbon neutral. As a part of Te Ara Awataha, Kaipātiki Project have been working closely alongside Northcote Intermediate and the wider community around these initiatives. The school is now engaged in several sustainable focuses which includes a trapping and monitoring of pest species club and previously growing native plants. They are looking to re-establish their native plant nursery in 2023, and are developing new initiatives around edible food gardening, composting and freshwater monitoring. In 2022, Kaipātiki Project has successfully supported the installation of the new CarbonCycle Compost Bins and this programme. Kaipātiki Project has also successfully bridged the growing relationship between the local community group leading the community garden and the school. Essential to this vision, is the connection to the diverse Northcote community. The rich diversity of Northcote and potential to tap into community knowledge is an opportunity the school wishes to take up. There is much to gain from connecting to local champions to help enrich the Northcote community.



MAHI TAHI

Partnering & Engaging to Build Resilient Communities

Kaipātiki Project is recognised as an innovator, trusted to lead by example and pilot new ways of working and living that help drive systemic change through world class thinking and delivery. We create and embrace opportunities to share knowledge across our diverse communities; ranging from hands-on workshops, volunteering opportunities, internships, festivals & community events, online platforms, project collaboration & partnerships and active network participation.



EcoFest North

EcoFest North is fantastic annual month-long festival filled with 70+ environmental events, activities and sustainable living actions. Something for everyone from outdoor events, upcycling, learning new skills, looking after ourselves and nature around us – the festival also promotes and supports health and wellbeing. Kaipātiki Project has successfully facilitated EcoFest North since 2013. As a community led umbrella festival, we engage and support local groups, organisations or individuals who run events during the festival. We provide the platform to register, promote events and offer shared learnings and encouragement throughout.



Begana Deconstruction

Begana Deconstruction is a new joint-venture between Localised, Habitat for Humanity, the Asylum Seekers Support Trust, Belong Aotearoa and Kaipātiki Project. The aim is to divert construction waste through deconstruction while creating meaningful employment opportunities for refugees and migrants. We have piloted a number of small projects, have successfully attracted support to develop our business model, and expect to be operational early 2023 with our new Business Development Manager.



Network North

The aim of Network North, launched in 2022, is to build the capacity and impact of organisations doing regeneration and sustainability work in Auckland's North. Many organisations are working towards similar goals or within overlapping localities. There is also overlap of resources & skills needed and even funding applications. These overlaps present both opportunities and threats to our collective capacity and impact in the region. Network North aims to foster communication and catalyse real collaboration, to maximise such opportunities. There is also so much support, wisdom and knowledge to be shared between organisations, that we could all surely benefit from.



Iwi, Hapū, Community Nursery Network

The kaupapa of the Iwi, Hapū and Community Nursery Network is to share information, methods and seeds across native plant nurseries, and by doing so increase the biodiversity of native plant life across the Auckland Region. Kaipātiki Project partners with Uru Whakaaro to facilitate and support the network. It aims to tautoko and encourage nurseries and potential nurseries to work collectively; support one another by sharing knowledge about growing native plants. The network also supports communications around how to set up and manage native plant nurseries. Our objective is to create a space where everyone – schools, iwi, hapū, community nursery staff and volunteers – can all support each other through sharing stories about growing native plants and their experiences of organising volunteering events and facilitating workshops. The network has grown to include 58 nurseries, with an aspiration for new nurseries to continue joining this growing initiative.



Environment Hubs Aotearoa

Environment Hubs Aotearoa (EHA) is an umbrella organisation for currently, 21 Environment Centres throughout Aotearoa who create thriving, resilient and sustainable communities, making our future a better place for everyone. EHA members upskill, educate, insulate, energise, inform, plant, weed, trap, recycle, fix, rescue food and divert waste throughout their communities. Our hubs connect with the public by delivering a huge variety of programmes, activities and sustainability-focused workshops. As a valued member of the EHA Network, Kaipātiki Project is one of a dedicated group of organisations making an impact in their communities, offering information, action, resources and solutions. Kaipātiki Project's Manager, Janet Cole is currently Co-Chair of EHA and Joanne Kyriazopoulos, our Grants & Impact Specialist is a member of EHA Funding Steering Group and the Sustainable Partnerships & Revenue Committee.

NGĀ MIHI MAIOHA

Our activities would not have been possible without your help, support, collaboration and encouragement.

CORE FUNDING PARTNERS



FUNDING PARTNERS

Auckland Foundation – The North Shore Fund
Community Organisation Grants Scheme (COGS)
Creative Communities Scheme
Ethnic Communities Development Fund
Eke Panuku Development Auckland
Kāinga Ora
Lottery Community Grants
Lottery COVID-19 Community Wellbeing Fund
Lottery Community Sector Research
Ministry of Social Development – Community Capability and Resilience Grant Fund
Pacific Development and Conservation Trust
Support for Volunteering Fund
Upper Harbour Local Board
Waitematā Local Board
Your West Support Fund

NETWORKS

Compost Collective
ECONZ
Environment Hubs Aotearoa
Iwi, Hapū & Community Nurseries Network
Kaipātiki Restoration Network
Network North
New Zealand Plant Producers Incorporated
Pest Liason Group (regional)
Volunteering Auckland
Upper Waitematā Ecology Network
Zero Waste Network

CORPORATE DONORS & SPONSORS

Allbirds
Calxa
Catalytic Foundation
Google Ad Grants
Ethos

EY
Fiftyfive5
Hargrave Project Management
Honey Sticks Ltd
Jasmax
Lightspeed HQ
Qrious
Pals
Satchi & Satchi
Sales Force
Specsavers Glenfield & Takapuna
The Fabric Store

IWI & COMMUNITY PARTNERS

Mana Whenua Kaitiaki PWG
Ngāti Whātua Ōrākei
ASPEC Construction
Auckland Botanical Gardens
Auckland City Mission Street Guardians – Tomorrow Inc
Auckland Libraries – Kaipātiki ward
Auckland North Community and Development
AUT students
Bark & Soil
Bayview Community Centre
Beautification Trust
Belong Aotearoa
Birkdale Beach Haven Community House
Chinese Conservation Education Trust
Community Waitākere
Conservation Volunteers NZ
Dough Boys
Dr Dan Hikuroa
Dr Mere Roberts
EcoMatters Environment Trust
Environmental Impact Assessments LTD
Glenfield Community Centre Inc
Habitat for Humanity
Habitat Hobsonville
Highbury Community House

Hobsonville Point Residents Association
Kaipātiki Community Facilities Trust
Lani Ormsby
Laura Donkers @ Limen Lab
Localised
Massey University Albany Ecology Club
NEDF
North Harbour Bluegreens National Party
Northcote Intermediate School
Oak & Thistle
Pacific Climate Warriors
Pacific Vision Aotearoa
Para Kore Ki Tāmaki
Pest Free Kaipātiki Restoration Society
Project K
Repair Café
Restoring Takarunga Hauraki
Skills Update
The Centre for Community Research and Evaluation at The University of Auckland
The ReCreators
Trees That Count
University of Auckland
VisionWest
Volunteering Auckland
Volunteering NZ

VOLUNTEERS

Board governance volunteers
Community group volunteers
Community restoration volunteers
Corporate volunteers
Gardening volunteers
Internship volunteers
Nursery volunteers
Operational, marketing and administrative volunteers
Project-based volunteers
Streamcare volunteers
Zero waste hub volunteers



Kaipātiki Project is committed to taking innovative steps to implement local programmes and collaborative solutions that align with Sustainable Development Goals and support this ambitious global framework.



**Kaipātiki
Project**

kaipatiki.org.nz

09 482 1172

office@kaipatiki.org.nz

17 Lauderdale Road, Birkdale

Tāmaki Makaurau Auckland 0626

Aotearoa New Zealand



/KaipatikiProject



@Kaipatiki.Project



/KaipatikiProject



KaipatikiEnviro



MIX

Paper from
responsible sources
FSC® C157047