



2019 ANNUAL REPORT



Kaipātiki Project

share in nature's revival

WHO WE ARE

Kaipātiki Project is a not-for-profit, community-based organisation, inspiring people to share in nature's revival. Based in Auckland's North we empower people of all ages to think globally and act locally to address nature biodiversity and living sustainably.

WHAT WE DO

Grow eco sourced, chemical free native plants at our two volunteer nursery sites.

Facilitate native bush regeneration through pest control, community restoration and training services.

Teach Kiwis how to live more sustainably through our practical education programmes and community initiatives.

Support local people to make a difference.

Believe that by working together, we can restore our native plants, birds, bugs and fish, and help revive our environment.

Photo on cover,
this page and of the Team
by *Pete Forrest*.



CONTENTS

TĒNA KOUTOU from the Chair and Manager

Meet OUR TEAM

Our IMPACT on nature's revival

FINANCIAL overview

Thriving native plant NURSERY - a hive of activity playing a vital role in nature's revival

- Our Nursery produced 30,000+ native plants
- Offering opportunities for our invaluable volunteers
- Celebrating diversity by bringing people with different experiences together, and everyone is welcome!

Enhancing NATIVE BIODIVERSITY through amazing ecosystem restoration programmes

- Continuous restoration at Eskdale Reserve Network
- Hobsonville Point Pesky Pests
- Sustaining Uruamo Pā Harakeke and raranga practices
- Restoration of Waipapa Stream
- Awataha Greenway Project & Jessie Tonar Scout Reserve restoration

Enabling SUSTAINABLE LIVING through education, innovation and behaviour change

- Planning sustainable building on home soil
- Inspiring change through education
- Zero Waste Kaipātiki Network
- Compost Collective reducing food and garden waste

Engaging youth and young at heart – YOUTH PROGRAMMES, COMMUNITY EVENTS & PARTNERSHIPS

- Collaborative partnership approach to build and sustain long-term relationships
- Stream Care Community Science monitoring programme involving local schools
- Enabling schools to help solve their local environmental challenges
- EcoFest North, a month-long series of events
- Enviro Hui North: Inspiration to Activation

THANK YOU for your contribution towards nature's revival

VISION

Connected, resourceful, healthy families, neighbourhoods and communities regenerating our planet's environmental systems.

MISSION

To unleash the creativity of the community to identify and solve local environmental challenges.

PRINCIPLES

Te Tiriti o Waitangi, a systems approach, eco-sourced, inclusive, creating value.

VALUES

Regenerative, respect, working and learning together, appreciative, getting it done.

TĒNA KOUTOU FROM THE CHAIR AND MANAGER



Charmaine Bailie, Board Chair



Janet Cole, Manager

This year at Kaipātiki Project, more than ever, we see there is a need for our work: local, hands-on activities and learning at our place or yours to bring about environmental regeneration. We know this because we are increasingly invited to support or start up a range of exciting initiatives, as our whakatauki says: "Mo te ao, mo te whānau, mo tatou kātoa – For the world, for our families, for all of us."

We are seeing increased symptoms of the biodiversity and climate crisis, and widespread concern reflected by declarations of a Climate Emergency, throwing the need for action into ever sharper relief.

Inspirationally, we are seeing the leadership of our youth to create the Climate Strike movement, and the energy of many community-driven organisations coming together to create change. It is reassuring to see iwi environmental practice supported to become more visible in the protection and regeneration of Tamaki environments. It has been our privilege to work with iwi to facilitate regeneration of the Awataha awa.

We have also seen our government progress the Zero Carbon Bill; a much-improved vision and purpose for DOC along with new funding; phasing out plastic bags; more rigorous freshwater targets; and moves toward product stewardship and container deposit systems.

Auckland Council has stepped up too – with Pest Free Auckland; with funding that will fast forward environmental initiatives from the Natural Environment and Water Quality targeted rates; as well as with Te Tāruke-ā-Tāwhiri – Auckland's Climate Action Framework.

Here we have been working hard to ensure we are being most effective with those we support and partner with – iwi, hapū, residents, neighbourhoods, schools, businesses, our network partners plus our funders and sponsors. To complement this, we continue to seek improvements in our own organisational sustainability through longer term planning, self-generated income, reducing our own footprint and challenging each other to do the best we can – with fun and laughter.

At our AGM this year, we look forward to celebrating the year's achievements as well as presenting our refreshed brand and website, reflecting our clarified focus. This work will nurture us as we continue to support, inspire and empower each other to achieve our collective vision in the years to come.

OUR PEOPLE

Generating abundant participation.
Empowering community leadership.
Telling inspiring stories.

OUR PROGRAMMES

Amazing ecosystem restoration.
Thriving native plant nursery.
Enabling people to live sustainably.

OUR ORGANISATION

The regenerative heart of Auckland's North.
Financially sustainable.
A great place to work.
A great organisation to work with.



“

Ko Taropehu te maunga

Ko Oruamo te awa

Ko Te Hau Kapua te takiwā

Ko Pākaurua te rohe

Ko Te Rōpu Kaipātiki tamore mātou

No reira, tēnā koutou, tēnā koutou, tēnā koutou katoa.

”



WELCOME

TO OUR TEAM AT KAIPĀTIKI PROJECT

THE BOARD

CHARMAINE BAILIE, Chairperson

Charmaine grew up just down the road from the Kaipātiki Project centre and has been involved with Kaipātiki Project since 2000 in many different roles. Charmaine is also a Director of Uru Whaakaro Ltd - a natural heritage company.

SAM TU'ITAHĪ, Deputy Chairperson

Sam joined the Board in July 2016 and is a Kaipātiki local. He has served in various community roles including as a SKIP champion overseeing parent-led, whānau-centred design initiatives. Sam was on the Board until November 2018.

LUCY MCKENZIE, Board member

Lucy joined the Board in July 2014. She is the Sustainability Advisor at AUT University and has spent many years working in the sustainability field in NZ and the UK.

JENNY CHILCOTT, Board member

Jenny has been on the Board since July 2016. Her background is in community engagement & development, and she also worked at Waitakere City Council as a Strategic Advisor on Project Twin Streams.

CERASELA STANCU, Board member

Cerasela joined the Board in October 2016. She has had senior roles in environmental NGOs in her native Romania and in Hungary. Here in New Zealand she has led sustainability management programmes at Fonterra and Landcare Research and is now a consultant sustainability strategist.

CHRIS VAN STADEN, Board member

Dr Chris van Staden is an accounting academic at AUT university. His research and teaching are in the areas of social and environmental accounting and reporting, financial accounting and social impacts. Dr Chris was on the Board until June 2019.

NIGEL GREEN, Board member

Nigel joined the Board in October 2018. He has worked as a Manager in the Social Profit sector since 1993. He has a broad experience in all aspects of management with a particular focus on developing and supporting community.

HILARY CHIDLOW, Board member

Hilary joined the Board in October 2018. She has over 22 years' experience as Manager Education for Sustainability at Auckland Council.

THE TEAM



JANET COLE,
Manager

Leading the team since January 2016, Janet has worked at Council, in the community and as a consultant. Although residing in her beloved western beaches, she has 'come home' to Kaipātiki (Janet grew up in Beach Haven) where she is excited to be supporting the team to address the biodiversity and climate crisis.



SANDRA ATKINS,
Operations Manager

Joining in November 2015, Sandra's role has grown to include HR, Health & Safety, financial reporting, while continuing to oversee some of the Compost Collective digital delivery. With a growing organisation and changing technology, Sandra continues to support the team to be even more effective while holding wellbeing and belonging at its core.



DEREK CRAIG,
Restoration Nursery Manager

Derek joined the team in May 2016 and admits he is a lucky chap to have a full-time job that represents his passion and uses all his training. Derek's main responsibilities are to manage plant production in the nursery and work with our volunteers. In addition, his advice and support to community groups and individuals is highly sought after.



JOANNE KYRIAZOPOULOS,
Grants & Impact Specialist

Joining the team in June 2019 Joanne is keen to identify, analyse and action opportunities for organisational growth, and communicate the positive impacts Kaipātiki Project's activities deliver across the community. She enjoys applying creative thinking to the workplace and building strong partnerships between our organisation and our funders.



BLANKA ROS,
Marketing Strategist

Blanka joined the team in July 2019, and brings 20 years of marketing experience with several of New Zealand's leading companies. As an enthusiastic brand champion, Blanka is responsible for brand and marketing strategy, and will continue to celebrate Kaipātiki Project through authentic stories of our achievements, vision and values.



NEIL HENDERSON,
Kaiwhakahaere Taiao / Restoration Activator

After working in restoration in the Waitakere Ranges and the Whau River Catchment for over a decade, Neil joined our team in November 2018. As project manager for Weed Free Trust, Neil developed many useful tools and educational materials to assist private property owners as well as volunteers working on public land.



SAM TU'ITAHĪ,
Kaitakawāenga Hāpori / Community Activator

Joining in November 2018, Sam has served community through his roles in education trusts Ako Mātātupu and Manaiakalani, as well as leading pilot programmes for positive parenting and youth development. With proven ability to connect with the students, Sam has established strong relationships with the local schools and community networks.



TAKUTAI MOANA WATTS,
Kaiawhina Kaitiaki / Restoration Assistant

Takutai Moana Watts is qualified in mahi raranga (traditional weaving) and is a kaitiaki (guardian) of the land. Joining in 2019, Takutai has experience in teaching traditional weaving and sustainable harvesting. Takutai ensures tikanga is followed in our harakeke programmes.



ANNA SHAW,
Administration Assistant

Anna worked as a volunteer in the Kaipātiki Project nursery for 18 months before joining the team in August 2017. Originally from Sweden, she has lived in Glenfield for the past 13 years with her Kiwi husband and two daughters. Anna manages a comprehensive Compost Collective digital platform to ensure our courses are well promoted and attended.



CRYSTAL ASTON,
Nursery Assistant

Previously one of our longest-serving and most treasured volunteers, Crystal is now on the payroll part-time, doing what she does best; tending to plant health in our Birkdale nursery, and assisting volunteers with disabilities to be part of the team.



DALIDA SEMENOVA,
Digital Media & Communications Co-Ordinator

First as a volunteer, Dalida joined in March 2019. As a manuhiri in Aotearoa, Dalida came from Kazakhstan to expand her professional skills, learn to resolve environmental issues and learn about Māori culture and their connection with nature. Falling in love with Kaipātiki Project, Dalida is pleased to continue contributing her skills.



BUFFIE MAWHINNEY,
Sustainability Activator

Buffie has worked in the community for over a decade in a multitude of roles and joined the Kaipātiki team to help with both, the Enviro North Hui and the Zero Waste Hui. The Enviro Hui successfully brought both environmental and low carbon communities together for the day.

Aroha goes out to Anna Halliwell, Nicky Davis, Jennifer Chenery and Judy Keats, who left during the year.
Thank you for all that you did to support our journey.

OUR IMPACT

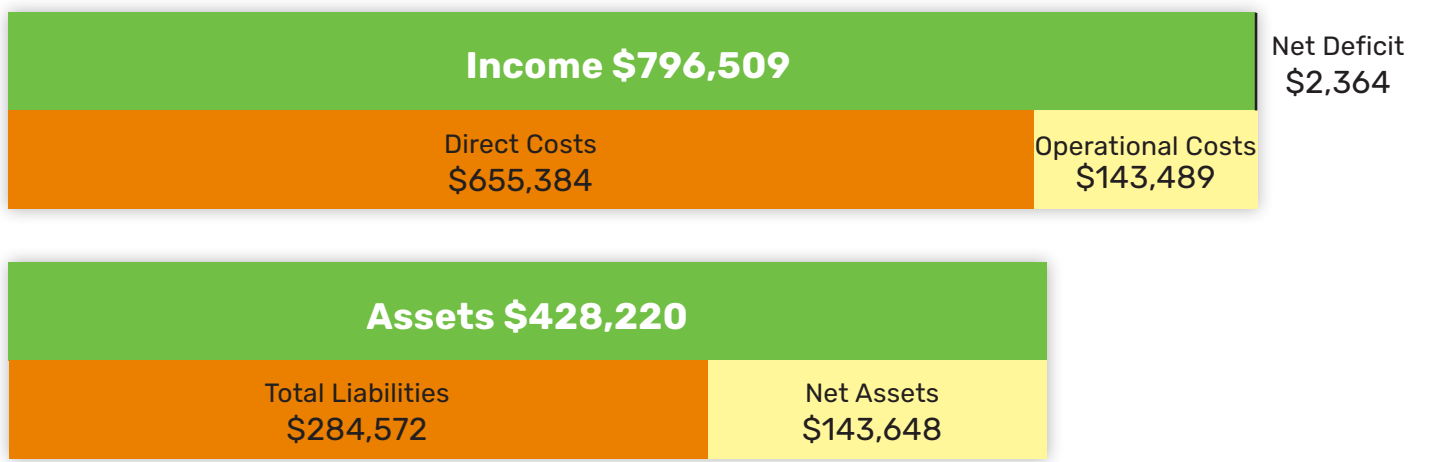
ON NATURE'S REVIVAL

2019		2018	% change
30,850	eco-sourced, chemical-free native plants grown (95 species)	21,219	↑ 45%
97	regular volunteers	95	↑ 2%
4,058	regular volunteer hours towards growing native plants	3,606	↑ 13%
28	restoration and planting days were held in Auckland	20	↑ 40%
584	restoration volunteers	384	↑ 52%
2,359	restoration volunteer hours towards restoration and planting activities	1,318	↑ 79%
302	sustainable living course participants across 26 courses	297	↑ 2%
6,231	Compost Collective workshop participants across 417 workshops	4,669	↑ 33%
493	tonnes of waste diverted	369	↑ 34%
40	students from four local schools participated in Kaipātiki Stream Care Community Science	40	consistent year on year

FINANCIAL OVERVIEW

AT A GLANCE

With an eye to future focus, we have significantly grown our staff delivery team over 2019 including bringing some contract time in-house, which resulted in a small net-deficit this year. This is part of investing in continuity and growing our core expertise for delivery. 2020 will see us remaining focused on high-value delivery and continuing to build greater capacity within the organisation for an impactful and sustainable future.

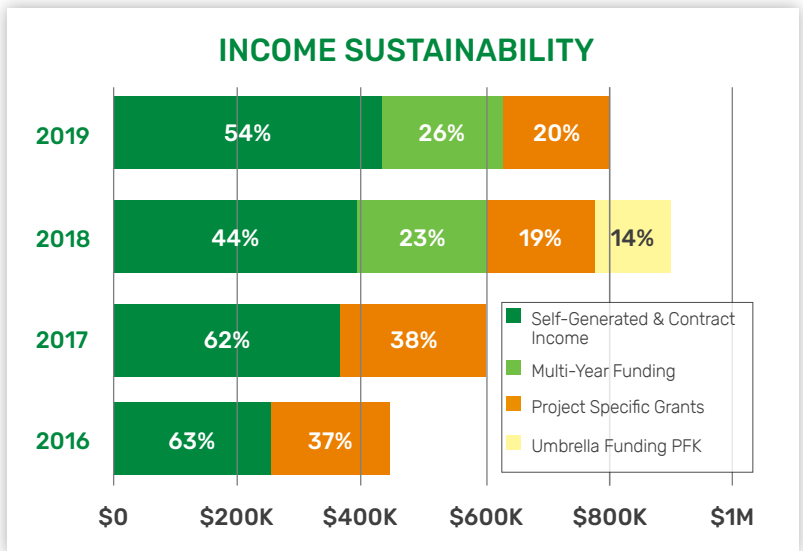


INCOME SUSTAINABILITY 2016-2019 SPLIT OF INCOME

Kaipātiki Project aims to become more financially self-sustaining through:

- Multi-year operational funding agreements
- Diversifying income streams including contracts
- Focusing on core impact opportunities
- Bringing expertise and experience to support new, emerging and other organisations
- Sustainable growth of 5-10% year on year

2019 has been a year of focus on consolidating our foundation, paying attention to multi-year funding security, seeking contracts that draw on our core expertise, and delivering well.



THRIVING NATIVE PLANT NURSERY

Every year, we eco-source, propagate and pot up tens of thousands of native plants to help restore the bush for our native birds, animals and plants, and remove carbon from our atmosphere. Our community-driven, eco-sourced, chemical-free kaupapa is part of our regenerative, whole system approach.



OUR NURSERY PRODUCED 30,000+ NATIVE PLANTS

This year was an exciting year for us as we exceeded an aspirational goal of growing 30,000 new plants, 45% more than the previous year. Our eco-sourced native plants have been used for community restoration, private backyards and many other inspiring programmes. We enjoy working with developers, landscape architects, restoration groups, schools, tertiary institutions, keen locals and our Council to ensure our urban environments remain connected with native vegetation. This year we have also worked with Auckland Council's Community Park Rangers and Hōkai Nuku who share our vision of a diverse restored environment.

Our nursery operates at sites in Birkdale and Hobsonville Point to produce an extensive range of native plants growing 95 species, from shrubs, trees, climbers, to ground cover as well as a mix of pioneering and canopy species, understorey and wetland plants. We grow all plants from seeds sourced from the Tāmaki Ecological District.

Our Hobsonville Point nursery site, surrounded by major walkways, is a small community nursery that attracts many local volunteers. They are enormously proud of their work, seeing their plants grow and helping others, such as gifting plants to over 150 student refugees to welcome them to Aotearoa.

By the end of this financial year all plants have been reserved to be sold, which is our best result to-date. Due to our strengthened relationships and larger commercial orders we are a major native plant supplier for community groups and parks stretching across the North Shore. We plan to extend the capacity of the nursery to support further growth. As a social enterprise, any surplus is put back into our nursery operation, enabling us to work towards being financially self-sustaining.

**A hive of activity
playing a
vital role
in nature's
revival.**



OFFERING OPPORTUNITIES FOR OUR INVALUABLE VOLUNTEERS

Local people make a significant contribution to the social development, economy and environment of Auckland's North through volunteering. Kaipātiki Project is brimming with amazing volunteers, bucking the national trend of a decline in volunteering.

We offer flexible arrangements and a variety of roles including: project-based volunteering, corporate and community group volunteering, regular volunteering at our two native plant nursery sites, operational, marketing and administrative support, community restoration days, internship, training for restoration leaders and board governance. We strive to enable our community to easily volunteer and everyone is welcome to join our volunteering whānau, even if it is just to enjoy morning tea!

Operational costs are greatly reduced through the substantial contribution of our volunteers, who give their labour and skills for free. Our volunteers are the heart and soul of our organisation and we are grateful to everyone who has volunteered with us this year. These outputs and outcomes delivered by our small team of staff and huge team of volunteers is our true measure of success.

“ Volunteering provides me with an opportunity to teach my kids about conservation ”



“ Coming here is a fun and fulfilling experience ”





CELEBRATING DIVERSITY

by bringing people with different experiences together, and everyone is welcome!

Our regular nursery volunteer groups reflect our community diversity. People of all ages, ethnicities and abilities join us for many different reasons. People come to learn, share knowledge, socialise, meet new people and get hands on experience.

Our Nursery Assistant Crystal Aston has significantly improved our volunteer opportunities for individuals living with a disability. We have four specialised support places each week at our Birkdale nursery which enables full participation. We work on a strengths-based model to grow their abilities and introduce new skills as appropriate. The teaching and guidance that takes place in the nursery improves skills, confidence, health and wellbeing. Our unique initiative allows effective contact between all volunteers as the nature of the nursery work requires equal status, the opportunity for individuals to get to know each other and supports active co-operation in pursuit of a shared goal.

The social environment of the nursery volunteer days promotes friendship, peer support and enables active participation for everyone in our community.

Another win-win volunteer initiative we offer is our internship

programme. This year we were fortunate to host international interns from Germany, USA, Hong Kong and China. Our internship programme enriches the work we do and provides our regular volunteers with opportunities to interact with young people from overseas who show a real interest in environmental issues.

- Nicola Mang researched our freshwater mussels (kākahi) in the Eskdale stream. We were absolutely delighted to find over 200 mussels of varying sizes in the 50-metre stretch of stream surveyed.
- Christine Cosquette researched the Waitematā shell barrier beaches and shore birds that frequent them. This will provide a focus in the coming year for the work we are currently doing on animal predator control at Hobsonville Point.
- Three student interns from Hong Kong and mainland China had very little practical background in the environment. While they were with us, they learned some basic skills about using tools like spades, planted their first ever plants and learned weaving skills.

Thank you to our wonderful interns, we loved having you as part of our team!



ENHANCING

NATIVE BIODIVERSITY THROUGH AMAZING ECOSYSTEM RESTORATION PROGRAMMES

Our community-led restoration stretches across several areas in Auckland. We are active in Eskdale Reserve Network which has been at the heart of our activities since Kaipātiki Project's inception, through to other neighbouring reserves in Northcote, Hobsonville Point, Parnell, Herald Island and more.



CONTINUOUS RESTORATION IN ESKDALE RESERVE NETWORK

Eskdale Reserve and the adjacent Witherford Reserve form part of the wider Eskdale Reserve Network. This network forms the 'crown jewel' of Kaipātiki Project's environmental restoration operations, with over 20 years of activity by staff and local volunteers.

Due to the impact of kauri dieback threats, track closures and off-limits bush areas, we have been revising our restoration approach of this Reserve Network. As a result, we developed greater focus in areas where we can freely operate with volunteers. These Halos are concentrated around the edges of the Reserve and incorporate weeding, replanting and animal pest control activities. We are working closely with Pest Free Kaipātiki, who have introduced this model into the wider Kaipātiki Restoration Network.

WEEDING AND PLANTING

Despite the significant restrictions placed on our activities in Eskdale Reserve by track closures, we have made good progress in clearing Japanese honeysuckle from the margins of Glenfield Road, kikuyu and blackberry from the Pā Harakeke site and swathes of tradescantia from stretches of the stream track near our Environment Centre and Lauderdale Reserve. These areas have become our initial Halo foci.

Contributions to our work have come from regular volunteers, Conservation Volunteers training courses, corporate groups and local schools, including Chelsea Primary School. All up, over 230 volunteers contributed 1,010 hours on 17 occasions. As part of our Restoration Training programme we ran planting days at two sites on Glenfield Road and near the track behind our Environment Centre, our volunteers assisted in the planting of 1,075 native plants.

PREDATOR CONTROL

Due to kauri dieback threat and track closures, we have been unable to work around many of the original traps set in 2017. This has forced a rethink and in 2019, working outside the closed areas we established new lines around the Chelsea Pony

Club paddocks, Pā Harakeke site and along the stream down to Lauderdale Reserve.

The siting of new lines close to the stream proved to be beneficial, enabling some predator control in areas like the estuarine wedge near Lauderdale Reserve, a site where inanga spawn, as well as long stretches of the Oruamo Creek where we recently discovered a large population of kākahi native freshwater mussels. Both of these freshwater species are subject to intense rat predation at various times of their life cycle. The recent status upgrade of Eskdale Reserve by Auckland Council has resulted in increased focus of biosecurity efforts by Council contractors, with subsequent intensified animal pest programmes. We will continue to work with Council to improve pest predator management in Eskdale Reserve Network. Our own lines are maintained by our volunteers. Kauri dieback closures impacted our total number of rats caught this year but two lines logged 28 rats for the April/May 2019 pulse alone. This is in line with last year's numbers during the same time period, requiring continued efforts towards a pest free Kaipātiki goal. As of August 2019, we have seven lines with a total of 75 traps operating in Eskdale Reserve.

JENNY CHRISTIANSON, THE DRIVING FORCE BEHIND KAIPĀTIKI PROJECT'S INCEPTION

Jenny is now working independently to deliver project work in two areas of the network having secured RENH funding from Auckland Council. In Eskdale she maintains a discrete site off Glenfield Road, as well as controlling tradescantia in an extensive stretch of Witherford Reserve. Jenny's programme, emphasising chemical-free and neutralising weeds onsite, aligns with the Halo model we at Kaipātiki Project are exploring in the Reserve Network. Jenny's unique methodology around restoration is being well documented on iNaturalist, one of the world's most popular nature apps, and she continues to make new discoveries with her intense focus on natural regeneration.



HOBSONVILLE POINT PESKY PESTS

Thanks to Upper Harbour Local Board funding, via the Upper Harbour Ecology Network, Kaipātiki Project engaged with HLC and local community at Hobsonville Point to establish trap lines in the North Western area of the Point.

Following engagement with the Ecopoint Group and a Waterford Retirement Village resident, the first trap line was set up ringing the Village. This line was initially maintained by resident Peter Tohil and people helping him. Success with this early effort led to more volunteers coming forward, led by Dorian Scott and Sue Hegge, and soon more lines were established stretching almost to the Wharf. In addition, engagement with Hobsonville Point Secondary School resulted in a group of students establishing two more lines, running from the South West of the school and connecting with the lines at the retirement village. As at end of June 2019, three possums, three hedgehogs, 22 mice and 34 rats were caught in traps. Hobsonville Point Pesky Pests trappers are now well and truly established.

As part of the wider community liaison, two beach clean-ups were undertaken around the shell barrier beach at Bomb Point. This was a great opportunity to introduce residents to this fragile ecosystem and assess possibilities for increased trapping focus in this area. Shell barrier beaches and their immediate mudflat/mangrove environs are important roosting and feeding sites for the migrant and local wading birds that inhabit the reaches of the Upper Waitematā. It is of note that there has been a recent sighting of a banded rail at Hobsonville Point.

More opportunities have arisen from the group now numbering around 12 regular volunteers, such as future establishment of artificial habitats for lizards, wading and shore bird monitoring and the creation of 'weta motels' in some of the wooded areas.

SUSTAINING URUAMO PĀ HARAKEKE AND RARANGA PRACTICES

The Pā Harakeke site in Birkdale, set within the 70-hectare Eskdale Reserve Network is hugely significant in our local community and enriches the work of local weavers. It is also a national taonga because it hosts around 53 harakeke varieties in one location. These varieties were sourced from the Rene Ormiston Collection, originally housed at Lincoln University. The site is also unique in that the full range of natural dyes used in traditional weaving are present in the nearby bush in Eskdale Reserve. In early 2019 we welcomed Takutai Moana Watts to the team. Takutai is under the guidance of Whaea Judy Te Hiwi, who helped establish the site 21 years ago and continues as Kaitiaki for the Pā today. Together they follow tikanga to carry out plant maintenance, lead volunteers and groups in restoration work and provide raranga tutoring. Takutai and Whaea Judy have delivered a series of weaving programmes to local schools this year, including Birkenhead College.

Takutai is leading restoration work at the Pā Harakeke site including the removal of pest plants in the Pā site itself, as well as the stream edges and areas further afield where plants useful for dyeing, such as tanekaha and kanono (manono), flourish. Upstream from the Pā there is also a small swampland that provides a key resource of



paru that is used in creating a black dye for muka. Presently, there is an intense infestation of invasive weeds in the swamp, endangering the balance of the natural system and therefore the effectiveness of the local paru in future traditional dying activities. This latter site will be the target in weed removal for the coming year.

This year we hosted several volunteer groups at the Pā site, including Restoration Leader Trainees, school groups, such as Chelsea Primary School, Birkenhead College, Eskdale Treehouse Early Learning Centre, and Street Guardians working in conjunction with City Mission and Tomorrow Inc charity.

With our Environment Centre and plant nursery close by, we have been growing harakeke for planting and providing an indoor space for weaving courses and workshops.

RESTORATION OF WAIPAPA STREAM

Generously supported by the Waitematā Local Board, Kaipātiki Project has had the opportunity to support the restoration of the Waipapa Stream in Parnell for a second year in collaboration with Biosecurity at Auckland Council.

During the year, five volunteer events were held at the current restoration site beside the old Parnell Train yards. Volunteers gifted 88 hours to weeding, planting, rubbish clean ups and beautification activities. Animal pest trapping was also undertaken and 80 rats and mice were caught in a year. Ngāti Whātua Ōrākei native plant nursery Ōkāhu Rakau supplied 300 native plants for the project.

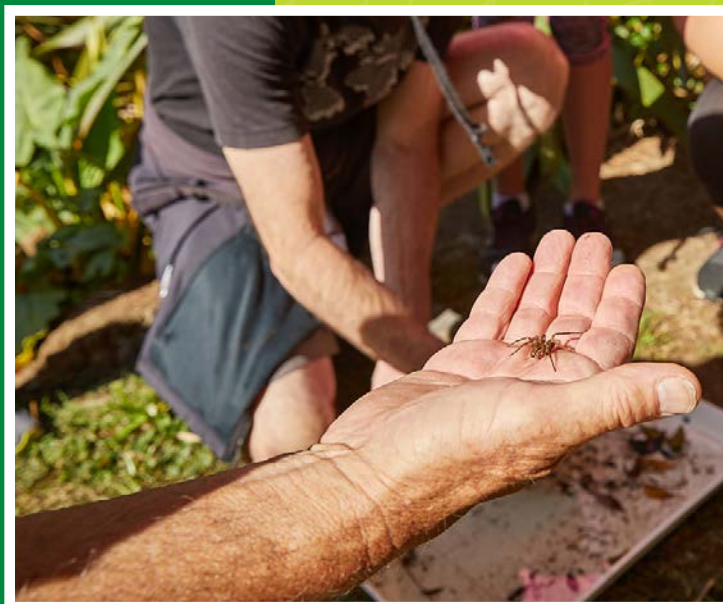
In addition, a collaboration with Parnell District School and local artists set up signage and inscribed a poem on a freshly painted handrail near the site. A 'trap library' was established at the Parnell Library in March 2019 and so far, eight rat traps and three Timms traps for possums have been rented out, with more traps requested.

AWATAHA GREENWAY PROJECT & JESSIE TONAR SCOUT RESERVE RESTORATION

This year was a successful foundation year of community engagement around ecological activities and goals, which will enrich the Awataha Stream daylighting project over the next 5+ years. Contracting to Panuku Development Auckland, and working closely with Northcote stakeholders, Kaipātiki Project has had the privilege of being asked to implement the innovative Mana whenua mauri indicator tool Take Mauri Take Hono, embedding matauranga Māori within the project, with the ultimate goal of creating a healthier and more resilient environment for all in Awataha Northcote.

We created a regeneration plan for the Jesse Tonar Scout Reserve based around Council's requirements for small parks and responding to the Mana Whenua indicator guidelines. We have also established monthly working bees at the site, initially focused on the removal of a large stand of running bamboo. In addition to these events aimed at encouraging engagement with immediate neighbours and locals, we have also brought in corporate groups, Northcote Intermediate School and scout groups.

One of the highlights has been working regularly with Street Guardians working in conjunction with City Mission and Tomorrow Inc charity. In late June we planted 280 native plants at the site.





Every year we deliver sustainable living workshops, events and experiences for everyone. For example, our Compost Collective project delivers outstanding food waste education to communities. This year, we diverted 493 tonnes of organic waste from landfill, a 34% increase on the previous year.

PLANNING SUSTAINABLE BUILDING ON HOME SOIL

KAIPĀTIKI PROJECT HQ - 17 LAUDERDALE ROAD, BIRKDALE

After years of hard work by generations of our staff and volunteers, we are proud to share the decision by Kaipātiki Local Board to go full gas with a sustainable building renewal for our home base at 17 Lauderdale Road, Birkdale.

The aspirational concept for a building large enough to realise the community's goals of a bustling EnviroHub of learning, plus one that demonstrates zero waste de/construction and green building has finally been signed off.

Detailed design is in progress, with consents and construction throughout 2020. We look forward to sharing

more detail as it comes to hand. Planning is already underway for relocating much of the nursery and gardens, as well as interim accommodation for activities that currently take place at the Centre. Please let us know if you would like to be involved with this exciting project.

ENGINE TESTING BAY - BOMB POINT DRIVE, HOBSONVILLE POINT

We are working with HLC and the community to develop a local EnviroHub at this site, to support the growing interest in environmental activities across Upper Harbour. We are looking to demonstrate green building in this project as well.

“ **A green building is one that is designed, built and operated in ways that reduce or remove any negative impact on the environment and the people using it. – NZ Green Building Council** ”

INSPIRING CHANGE THROUGH EDUCATION

At our Environment Centre we offer practical, innovative and inspiring courses to help people live more sustainably. Working with excellent tutors including Judy Keats, Julie Craig, Trish Allen and Dave Grant, we offer a diverse range of topics to help people with their environmental challenges. Among the 26 courses we offered this year, some courses ran for a day and some over multiple sessions.

A highlight was our eight-week Hands-on Ecology course attracting 24 students. The course inspired participants to expand their home gardens, change the way they live and even share their acquired knowledge with their local community. A measure of our success is when our interaction continues to spread further into the community beyond our reach.

We understand that the way people learn has changed significantly over time with readily available content online. As a result, we look to diversify our educational offerings to encourage continuous learning. This year we introduced a fun-facts 'Plant of the Day' initiative as well as Te Reo Māori classes where we share stories and upskill our volunteers, staff and wider community.

With the upcoming rebuild of our Environment Centre over the next few years, we are looking forward to creating a new fit-for-purpose space to better connect with our people and community. As part of building and strengthening connections between people and the environment, we strive to foster a sense of stewardship for our living planet.





ZERO WASTE KAIPĀTIKI NETWORK

Zero Waste Kaipātiki is a group of passionate people from a collective of four community houses; Glenfield, Bayview, Highbury and Birkdale-Beach Haven and Kaipātiki Community Facilities Trust, Bike Kaipātiki, North Shore Resource Centre and residents from the Kaipātiki area, with support from Kaipātiki Project, funded by Kaipātiki Local Board and the national Zero Waste Network.

Our network initially met at the end of 2017 to discuss how to best support and grow waste wise practices in the community. Since then the group has held five workshops, with new members joining and growing the movement for resource recovery and creating local employment. We focused on the following areas:

- Telling stories and sharing ideas via social media: We set up a Zero Waste Kaipātiki Facebook page to engage with the community and share success stories and ideas for reducing waste.
- Food waste & compost: A grant from Auckland Council's Waste Minimisation & Innovation Fund enabled a pilot project working with local food businesses. Thanks to Ravenhill in Birkenhead, Manna Café in Birkdale

and FoodCity ethnic foodcourt in Northcote, we audited their food waste and tailored advisory packages and solutions specific to each business to reduce their waste to landfill, with no cost to the business. These case studies are now available to share more widely.

- Zero Waste Map / recycle information: A map with local recycling, second hand and other waste solutions was published in the Kaipātiki Information Trail making it easier for people to reduce their waste.
- Community collection hubs: We investigated the 'difficult to recycle' items e.g. polystyrene and batteries, and options for providing local collection points, which is an ongoing initiative.
- Up-cycling from house deconstruction: We explored the potential for diverting house waste with HNZ, this is now part of a regional project. We also supported members to apply for further funding for their own projects.

Promoting, facilitating and coordinating ways to achieve zero waste in Kaipātiki is an ongoing focus for Kaipātiki Project.



COMPOST COLLECTIVE REDUCING FOOD AND GARDEN WASTE

A behaviour-change programme building community capacity to divert waste from landfill and carbon from the atmosphere through on-site composting of food and garden waste.

Compost Collective is one of many initiatives contributing to Auckland's aspirational goal of zero waste by 2040. To encourage greater involvement, our workshops are delivered free across the Auckland region. In addition, our group of 12 facilitators work with our local communities and cultural/language groups to promote composting. This year 417 workshops took place with 6,231 participants, a third more than last year.

The Compost Collective digital platform is jointly delivered by Kaipātiki Project and EcoMatters Environment Trust, as a contract to Auckland Council. This digital platform acts as the foundational communications tool for the programme, supporting the work of field-based Compost Collective facilitators.

As demand grows, Compost Collective has continued to promote the Sharewaste initiative this year. Sharewaste enables residents,

businesses, community gardens and enviro-hubs to register as donors or hosts of organic waste. Connecting the two together, people can share their waste in a way that benefits residents, organisations and the local environment. Compost Collective has also set up six composting hubs. These provide a local point of processing organic waste, and will be monitored in the coming year to capture their volume and impact.

The Compost Collective contract is continuing in the coming year, with the intent to develop new long-term goals. We will continue to offer workshops, assist compost practice in wider community situations and support composting hubs as local processing initiatives.

compostcollective.org.nz





ENGAGING

YOUTH AND YOUNG AT HEART – YOUTH PROGRAMMES, COMMUNITY EVENTS & PARTNERSHIPS

Through engagement and involvement we unleash the creativity of the community to identify and solve local environmental challenges.

COLLABORATIVE PARTNERSHIP APPROACH TO BUILD AND SUSTAIN LONG-TERM RELATIONSHIPS

The environment is bigger than any one organisation, and the skills, relationships and effort required to achieve the wins that will benefit all of us need to come from many. For Kaipātiki Project, collaboration, partnership and working together is the way we roll. Although this approach requires investing time to build relationships, it's a worthwhile investment. We enjoy learning from those we work with, whether it's in the bush, nursery, sorting waste, meeting with funders, planning a hui, examining our financials or running a workshop; we learn from our partners every day. We would like to celebrate these partnerships that have produced rich relationships, learning and had a huge impact for those involved.

Te Reo Tuatahi is a unique language programme that takes native speakers from the community to teach mainstream classes. This year, we have launched a staff and Kaipātiki Project whānau class, with the intention of creating a second community class, when resources allow. Our Kaiako Lani Ormsby and Keri Cullen have provided a wonderful context for us all to begin feeling confident to use te reo every day, as well as be attuned to ways of acknowledging and supporting Māori aspirations in our work. Their stories and explanations have been generous and inspiring, and we in turn have been able to support the group's efforts to grow their offering across the North Shore.

Para Kore Ki Tāmaki teach waste minimisation to 30 different Māori organisations, enabling marae, kura kaupapa and other community groups to evaluate their waste streams and the effects we all have on Papatūānuku. **Pacific Vision Aotearoa** is working towards zero waste from Pacific people and their communities. **Zero Waste Network** represents community enterprises across Aotearoa who are working towards zero waste. This year, we worked closely with these amazing groups to organise the **Community Zero Waste Hui & Awards**, together with our empowering funder Auckland Council's Waste Solutions. A special outcome of this collaboration was supporting the Rangatahi leaders to host a youth workstream, resulting in boosted schools' engagement. Feedback was that we had achieved the most diverse gathering yet.

We look forward to seeing more innovative, impactful delivery come from collaboration in the years to come.



STREAM CARE COMMUNITY SCIENCE MONITORING PROGRAMME INVOLVING LOCAL SCHOOLS



Kaipātiki Project, in partnership with local freshwater ecologist Brett Stansfield from Environmental Impact Assessments, has completed its second year of stream care community science monitoring. Working with four schools, the programme comprises children monitoring four stream sites located in four catchments of Kaipātiki. The programme has significantly contributed to our understanding of the ecology and water quality of our awa with data being reported to Auckland Council WaiCare and New Zealand Freshwater Fish Database.

Data collated includes; macroinvertebrate communities, onsite measurements of water temperature, dissolved oxygen, pH and water clarity. At each environmental class, this data collation is further enhanced using technical equipment of EIA Ltd to include native fish, specific conductivity, turbidity and flow.

Children's involvement heightened their awareness of the environmental impact their actions have, taught them about stream life and scientific measuring practices, as well as prepared them as environmental champions, scientists and advocates for the awa of the Kaipātiki rohe.

Results from this monitoring programme provided a baseline of knowledge from which future comparisons can be made to

determine whether land management practices in these catchments are impacting on surface water quality and ecology. It has also been recognised that ecological improvements are needed for all catchments with a strong request for greater fish diversity, reduced pollution, community clean-ups, educational signage, continued monitoring, bigger fines for polluting, connecting with more schools, swimmable and drinkable stream water.

There has been a ground swell of enthusiasm with this programme with an ambition to expand the project by including monitoring of E.coli bacteria and suspended solids concentrations with two local high schools. This would complement existing monitoring and provide some insight towards suspended sediment loadings and bacteria concentrations in our streams, while also enabling our community to further track changes in environmental quality of our streams.



Kahika
Creek



Castleton
Creek



Oruamo
Creek



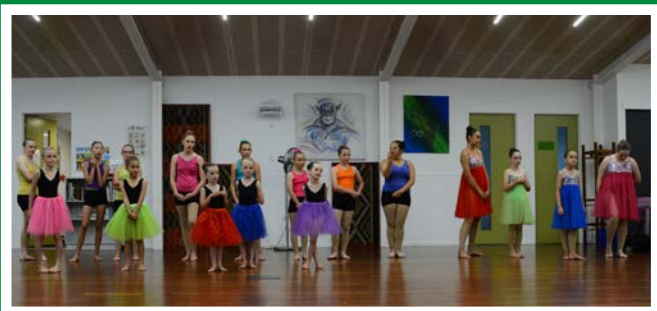
Waimanawa
Creek

ENABLING SCHOOLS TO HELP SOLVE THEIR LOCAL ENVIRONMENTAL CHALLENGES

We continually look for opportunities to support youth to achieve their environmental goals. In addition to the stream care project, we engaged with a number of local schools to contribute to their project-based learning, support them in their environmental initiatives or taught students a particular skill.

It has been rewarding working alongside these young people. These student-led projects provide an opportunity for them to connect and collaborate on active projects in the community, while achieving learning goals. These projects varied from working with the Design and Visual Communication class to working on pest monitoring and control, where a group of students from Hobsonville Point Secondary School worked in sync with wider community groups on pest monitoring lines and pest control through established trap lines in Hobsonville Point. Such projects are important for giving our biodiversity the best chance of survival.





ECOFEST NORTH, A MONTH-LONG SERIES OF EVENTS

With over 2,500 participants and 12k people reached via social media channels, EcoFest North 2019 was a successful series of events coordinated by Kaipātiki Project, that brought together communities and organisations alike. EcoFest North promoted all things Eco to those who are curious and excited about stepping out and contributing towards a more environmentally aware North Auckland. It enabled families and whānau to make positive changes in their daily life through engagement, education and experiential activities.

The event, running from 9 March to 13 April 2019, promoted and facilitated 38 eco events across North Auckland ranging from beach clean ups, sustainable travel activities, volunteering, bush restoration, composting and home centred eco practices. With such a range of events, there was something for everyone and all ages.

Serving as a launch pad for future events spearheaded by Kaipātiki Project and its partner organisations, the event stimulated a significant environmental discourse, positive action and interaction in the months following the event, including the EnviroHui North. EcoFest partner organisations included; Pest Free Kaipātiki, Bike Kaipātiki, ANCAD, GAPO, Love Food Hate Waste, Live Lightly, Compost Collective, AT, Fern Glen Gardens, Clean up Crew, AUT University, Local Boards and Auckland Council. Thank you everyone!



ENVIRO HUI NORTH: INSPIRATION TO ACTIVATION

As part of Kaipātiki Project's role to support cooperation and shared learning across Auckland's North, this year we trialled the approach of hosting a hui on 15th May to bring together all those focused on addressing environmental issues. Our theme was Inspiration to Activation.

In the spirit of cooperation, we partnered with Forest & Bird North Shore, ANCAD, Auckland Council Biodiversity and Live Lightly, to ensure effective outreach and focus on areas of interest for our communities.

About 90 people contributed, learnt, participated, exchanged ideas, made connections, brainstormed, and strategized, with representation from 42 groups and organisations. The outcome of

the hui were six Calls to Action, which together we will continue to develop.

Thanks to Auckland Council for funding support to make the hui possible. Council also supported the Para Kore ki Tāmaki Mana Rangatahi programme to lead a youth climate session and promote the opportunity to youth. Thanks to AUT Akoranga campus for providing the venue and catering at a subsidised rate through their partnership programme. And thanks to our fantastic facilitators and experts for their time, inspirational delivery and generous sharing of experience, skills, findings and insights.

THANK YOU

FOR YOUR CONTRIBUTION TOWARDS NATURE'S REVIVAL

Our activities would not have been possible without your help, support, collaboration and encouragement.

CORE FUNDING PARTNERS



FUNDING PARTNERS



CONTRACT PARTNERS



CORPORATE PARTNERS & SPONSORS





IWI & COMMUNITY PARTNERS

Mana Whenua Kaitiaki PWG
Ngāti Whātua Ōrākei
Auckland North Community and Development
Birkdale Beach Haven Community Project
Conservation Volunteers New Zealand
Chinese Conservation Education Trust
EcoMatters Environment Trust
EcoPoint
Environment Hubs Aotearoa
Environmental Impact Assessments
Eskdale Reserve Network
Global Action Plan Oceania
Greenhithe Community Trust
Herald Island Environmental Group
Hobsonville Point Residents

Association
International Study Abroad
Kaipātiki Community Facilities Trust
Kaipātiki Restoration Network
North Shore Forest and Bird
North-West Wildlink
Ōkahu Rākau
Pacific Vision Aotearoa
Para Kore Ki Tāmaki
Parnell Library
Pest Free Kaipātiki
Repair Café
Te Reo Tuatahi
Tomorrow Inc
Upper Harbour Ecology Network
Verran Eskdale Restoration Group
VisionWest
Volunteering Auckland

Whaea Judy Te Wihi
Whenuapai Restoration Group
Workbridge
Zero Waste Network
Zero Waste Kaipātiki

VOLUNTEERS

Board governance volunteers
Community group volunteering
Community restoration volunteers
Corporate volunteers
Gardening volunteers
Internship volunteers
Nursery volunteers
Operational, marketing and administrative volunteers
Project-based volunteers
Restoration leader trainees



UNITED NATIONS SUSTAINABLE DEVELOPMENT GOALS

In 2015, the United Nations adopted the 2030 Agenda for Sustainable Development that includes 17 Sustainable Development Goals (SDGs). The work we do at Kaipātiki Project supports local activities that contribute to achieving these goals.



5 WAYS OF WELLBEING

The Five Ways to Wellbeing, Ētahi ara e rima ki te ngākau ora, is a set of five simple actions that have been proven to improve wellbeing in everyday life. They are:



CONNECT
Me Whakawhanaunga



GIVE
Tukua



TAKE NOTICE
Me aro tonu



KEEP LEARNING
Me ako tonu



BE ACTIVE
Me kori tonu

We have applied this model to all the work we do. We understand that being active in environmental projects, connecting to others and learning new skills helps ourselves and our planet.



Kaipātiki
Project

kaipatiki.org.nz

09 482 1172
office@kaipatiki.org.nz
17 Lauderdale Road, Birkdale
Tāmaki Makaurau Auckland 0626
Aotearoa New Zealand

